

THE FACILITIES TIMES

A FACILITIES MANAGEMENT EMPLOYEE UPDATE



AUBURN
UNIVERSITY



New light poles, sidewalks and sod were installed as a part of the HSS summer infrastructure improvement project.

INSIDE THIS ISSUE:

Spirit of Excellence Award

Jessica DeVine, Building Services, received a Spirit of Excellence award in August.

Page 4

United Way Fundraiser

Be on the lookout for your 2016 United Way pledge card. The deadline to return your card is Tuesday, Nov. 15, 2016.

Page 4

Graduation Platforms

Staff from four shops designed, built and installed two sets of stairs and a platform for graduation photos on Samford Lawn.

Page 4

Southern Union Summer Classes

Fifty-three Facilities employees completed summer classes at Southern Union State Community College.



From left: Jerry Dowdell of Landscape Services, and Ray Hornsby of HVAC, look on as Eddie Struzick of Preventative Maintenance, practices his welding skills in class.

Full story on page 3.

Design Services Summer Projects

Design Services worked on various projects across campus to improve the quality of student learning environments.



A quiet zone was created in the Student Center, giving students a location to study and relax.

See additional projects on page 2.

Design Services

Design Services recently completed numerous projects across campus. Take a look at a few of the projects:

Foy Hall Second Floor Lobby

Before and after photos



Students in Auburn's new international student recruitment program needed a space where they could gather, collaborate, eat and study.

This new space does not require a proficiency in English to navigate as subtle cues, subliminal color usage and floor wayfinding techniques are used. Additionally, Design Services was able to triple seating capacity.



Spidle Hall Working Labs Studios

Before and after photos



The interior design program's upper level studios had not been renovated since Spidle Hall was built in 1962, and did not support the needs of the current interior design student.

Through partnerships with vendors, the majority of products in the two labs were donated, such as flooring, lighting and furniture. The furniture and fixtures were selected with the help of a sophomore-level group of students, which allowed the students to voice their actual needs while giving them practical work experience.



Master's of Accountancy Graduate Lab



The Master's of Accountancy graduate lab space in Lowder Hall was outdated and did not support the needs of today's students.

Design Services worked to update the space with bright colors, clean lines and comfortable furniture. By removing the stained carpet, old furniture and uncomfortable seating, the space is now inviting to students that spend long periods of time in the area.



Lowder Hall Classrooms



Multiple classrooms in Lowder Hall were updated to replace old furniture and worn carpet in addition to bringing bright new colors in on the walls.

Southern Union Summer Classes

By Maggie Barlow

Each year, Facilities employees are encouraged to participate in free summer classes at Southern Union State Community College. The professional development program is part of a collaboration between Facilities and Southern Union.

Classes offered this summer included:

1. Welding I- Basic Shielded Metal Arc Welding and Gas Metal Arc Welding
2. Welding II with Pipefitting and Threading
3. Basic Electricity
4. Basic Workplace Communication

Employees attended classes on Friday mornings from 8 a.m. until noon.

“The classes are designed to provide professional development opportunities for employees who want to expand their skills. By expanding their skill set they are setting themselves up for possible advancement opportunities in the

future. By bettering our employees, we are bettering Facilities Management as well,” said Matt Skinner, Operations.

Basic Workplace Communication was a 12-hour course and included three parts: workplace communication- best practices and basic grammar; applications and resumes; and interviewing skills.

Basic Electricity was 32 hours total and included sections on power distribution and an introduction to transformers.

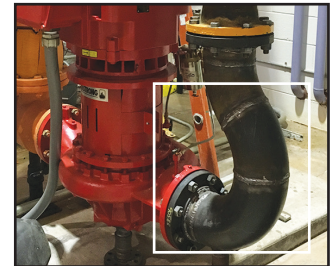
Basic Welding consisted of two parts for a total of 32 hours. Part one covered Basic Shielded Metal Arc Welding and part two covered Gas Metal Arc Welding.

Welding II was designed to build on what was taught in Basic Welding, so employees who previously took Welding I were encouraged to return for Welding II this summer.

James Lyons, Plant Operations for

Utilities and Energy, completed both Welding I & II. Last summer Lyons took Welding I and, based off his good experience with the course, decided to take Welding II this summer.

“I took the course to be acquainted with welding. I was originally hired as a welder in project construction, but I got away from it. This was my opportunity to get back into it and refresh my skills. It was a great opportunity,” said Lyons. Lyons has already used his skills from the classes at his current position in Facilities.



Adaptations Lyons made to a pump at Utilities and Energy using the skills he learned in Welding I & II.

Basic Workplace Communication



Front: Emmitt Kelly, Anna Reed- instructor, Sonora Russell, Wayne Staley and Garland Trimble.

Back: Kenneth Sullins, Arthur Taylor, Niesha Hinds, Teresina Muhammad and Bill Dempster.

Welding I- Basic Shielded Metal and Gas Metal



Front: Eddie Struzick, Robert Joyce and Ladarius Ezell.

Back: Derrick Crosby- instructor, Greg Powell and Jonathan McDonald.

Basic Electricity



Front: Maurice Odomes, Oscar Preston and Jerontavious Flournoy.

Back: Carlton Jones- instructor, King Hutchinson Jr., Edwin Wood and Cory O’Neal.

Welding II & Pipe Fitting and Threading



Front: Steve Kirk and Tim Watts.

Back: Derrick Crosby- instructor, Junior Decker, Jeff Brisky and Joseph Gulledege.

REQUIREMENTS TO APPLY:

- Must be a full-time employee.
- No corrective action in the past 12 months.
- Most recent Performance Appraisal is “Strong” or higher.
- Must commit to attending each session.

NOT PICTURED:

Basic Workplace Communication

- James Duncan
- Alvin Echols
- Nathan Evans
- Carlos Flakes
- Michael McCain
- Lori Surfield
- Arthur Taylor

Basic Electricity

- John Clark
- Kenneth Bledsoe
- Jerry Dowdell
- Jason Foshee
- Derrek Hall
- Phillip Thompson
- Blake Lloyd
- Charles Maddox
- Mike Patterson
- Richard Speir

Basic Shielded Metal Arc Welding

- Jerry Dowdell
- David Floyd
- Jason Foshee
- Derrek Hall
- Donald Hornsby
- Bart Jones
- Charles Maddox
- Steven Olaveson
- Morris Randolph
- Victoreold Walker

In memory of the late Bradley Spraggins.

Gas Metal Arc Welding

- James Lyons
- Arlin Spraggins
- Larry Brazell
- Roydrell Lawson
- James Lyons
- Stephen Stroud
- Arlin Spraggins
- Stephen Stroud

Welding II

- James Lyons
- Arlin Spraggins

Pipefitting and Threading

- Larry Brazell
- Roydrell Lawson
- James Lyons
- Arlin Spraggins
- Stephen Stroud

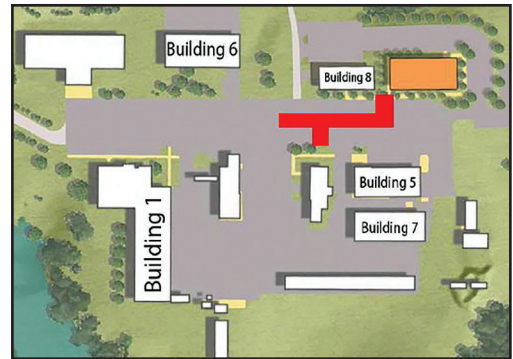


Be on the lookout for 2016 United Way pledge cards. They should be returned by **Tuesday, Nov. 15, 2016!** Completed cards will be collected every Tuesday and turned in for door prizes given by the United Way.
**All cards must be returned regardless of completion.*

Congratulations!



Jessica DeVine, Building Coordinator for Building Services, won the August Spirit of Excellence award for Admin/Professional.



Red area indicates road and parking closures.

During October and the first week of November, expect road and parking space closures as the utility infrastructure for the Risk Management and Safety building is installed. For more information, contact Julie Cannon via email at jec0051@auburn.edu.

GRADUATION PLATFORMS

The Carpentry, Heavy Construction, Paint and Roofing shops worked together to create two sets of stairs and a platform, which were used for the first time by August graduates. The stairs help graduates pose behind the Auburn University sign on Samford Lawn and the wall at the corner of Thach and East University.



Joey Ellis uses a Lull to put the platform on a truck for transportation to Samford Lawn.



Everyone worked to ensure safety of the crew and pedestrians during the move, which took place at 6 a.m. to avoid traffic.



Many people were needed to safely guide the platform to its location on Samford Lawn.



Crews carry the platform across Samford Lawn to avoid driving across the grass.



Platforms were set on bases in order to preserve the ground below.

Correction from August 2016: Construction for the Risk Management & Safety (Building 9) has an estimated completion date of March 27, 2017.

Editorial and Writing Staff:

Maggie Barlow '16
 Martha Gentry '98

Layout & Design

Maggie Barlow

Photography

Maggie Barlow
 Julie Cannon
 Martha Gentry
 Perrin Holloway
 Charlotte Weaver
 AU Photo Services
 Design Services

Submit Ideas & Feedback

Via online form:

<https://aub.ie/Q3Rjg4>



Please remember to recycle this newsletter.



AUBURN UNIVERSITY
 FACILITIES MANAGEMENT